



# Iowa Ag News – Cattle on Feed

Iowa Field Office · 210 Walnut Street Ste 833 · Des Moines IA 50309 · (515) 284-4340 · (800) 772-0825  
fax (515) 284-4342 or (800) 719-1794 · [www.nass.usda.gov/ia](http://www.nass.usda.gov/ia)

Cooperating with the Iowa Department of Agriculture and Land Stewardship

October 19, 2012

Media Contact: Greg Thessen

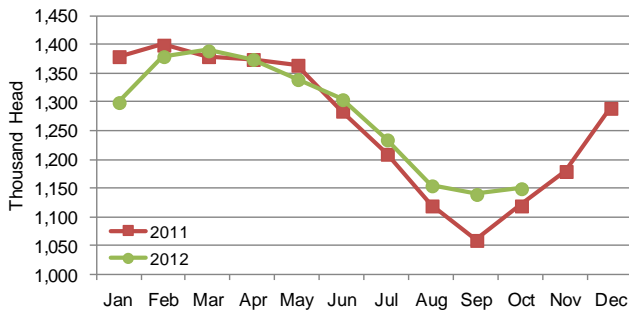
Cattle and calves on feed for slaughter market in Iowa for all feedlots totaled 1,150,000 on October 1, 2012 according to the USDA, National Agricultural Statistics Service, Iowa Field Office. The inventory is up 1 percent from September 1, 2012 and up 3 percent from October 1, 2011. Feedlots with a capacity greater than 1,000 head had 590,000 head on feed, unchanged from last month but up 7 percent from last year. Feedlots with a capacity less than 1,000 head had 560,000 head on feed, up 2 percent from last month but down 2 percent from last year.

Placements during September totaled 179,000 head, an increase of 13 percent from last month but down 29 percent from last year. Feedlots with a capacity greater

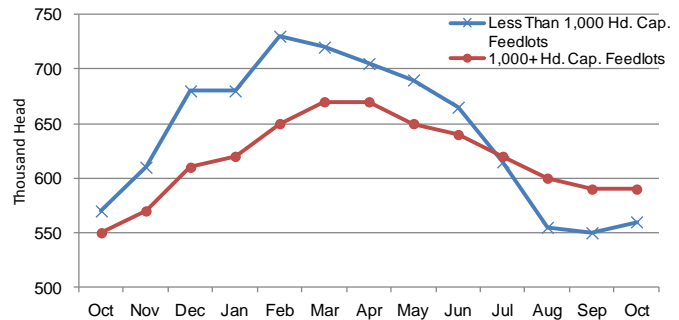
than 1,000 head placed 89,000 head, up 17 percent from last month but down 23 percent from last year. Feedlots with a capacity less than 1,000 head placed 90,000 head. This is up 8 percent from last month, but down 34 percent from last year.

Marketings during September were 164,000 head, down 3 percent from last month and down 10 percent from last year. Feedlots with a capacity greater than 1,000 head marketed 87,000 head, up 4 percent from last month, but down 5 percent from last year. Feedlots with a capacity less than 1,000 head marketed 77,000 head, down 9 percent from last month and down 15 percent from last year. Other disappearance totaled 5,000 head.

**Cattle on Feed, Inventory on all Feedlots, Iowa: 2011-2012**



**Cattle on Feed, Inventory by Feedlot Capacity, Iowa: Past 12 Months**



## All Cattle on Feed, Iowa

Item	Lots 1,000+ Head	Lots Less than 1,000 Head	All Lots
	(1,000 Head)	(1,000 Head)	(1,000 Head)
Cattle on Feed, September 1, 2012 .....	590	550	1,140
September Placements .....	89	90	179
September Marketings .....	87	77	164
September Other Disappearance .....	2	3	5
Cattle on Feed, October 1, 2012 .....	590	560	1,150

## Cattle on Feed: Number on Feed, Placements, Marketings, and Other Disappearance by Month, 1,000+ Capacity Feedlots

[Cattle and calves on feed are animals for slaughter market being fed a ration of grain or other concentrates and are expected to produce a carcass that will grade select or better.]

State	Cattle on Feed October 1			Placements during September			Marketings during September			September Disappearance other than Slaughter <sup>1</sup>		
	2011	2012	'12 as % of '11	2011	2012	'12 as % of '11	2011	2012	'12 as % of '11	2011	2012	'12 as % of '11
	(1,000 Head)	(1,000 Head)	(Percent)	(1,000 Head)	(1,000 Head)	(Percent)	(1,000 Head)	(1,000 Head)	(Percent)	(1,000 Head)	(1,000 Head)	(Percent)
Arizona .....	280	272	97	19	20	105	21	18	86	1	1	100
California .....	490	475	97	70	50	71	49	52	106	6	3	50
Colorado .....	1,070	1,000	93	275	225	82	185	150	81	10	5	50
Idaho .....	220	230	105	67	61	91	41	35	85	1	1	100
<b>Iowa .....</b>	<b>550</b>	<b>590</b>	<b>107</b>	<b>115</b>	<b>89</b>	<b>77</b>	<b>92</b>	<b>87</b>	<b>95</b>	<b>3</b>	<b>2</b>	<b>67</b>
Kansas .....	2,320	2,230	96	500	375	75	375	310	83	15	15	100
Nebraska .....	2,210	2,330	105	560	470	84	350	370	106	10	10	100
Oklahoma .....	370	335	91	88	57	65	79	45	57	4	2	50
South Dakota ..	205	195	95	51	50	98	35	39	111	1	1	100
Texas .....	2,940	2,680	91	560	480	86	490	400	82	20	20	100
Washington .....	208	213	102	54	46	85	38	40	105	1	1	100
Other States ....	419	439	105	110	81	74	58	52	90	2	3	150
United States ..	11,282	10,989	97	2,469	2,004	81	1,813	1,598	88	74	64	86

(D) Withheld to avoid disclosing data for individual operations.

<sup>1</sup> Includes death loss, movement from feedlots to pasture, and shipments to other feedlots for further feeding.

## Cattle on Feed: Number on Feed by Class, 1,000+ Capacity Feedlots by Quarter, State, and United States, 2011-2012

State	Steers & Steer Calves			Heifers & Heifer Calves			Cows & Bulls		
	October 1, 2011	July 1, 2012	October 1, 2012	October 1, 2011	July 1, 2012	October 1, 2012	October 1, 2011	July 1, 2012	October 1, 2012
	(1,000 Head)	(1,000 Head)	(1,000 Head)	(1,000 Head)	(1,000 Head)	(1,000 Head)	(1,000 Head)	(1,000 Head)	(1,000 Head)
Arizona .....	277	265	268	3	14	4	0	0	0
California .....	425	415	410	63	64	65	2	1	0
Colorado .....	730	645	670	335	320	325	5	5	5
Idaho .....	136	127	137	82	69	89	2	4	4
<b>Iowa .....</b>	<b>380</b>	<b>445</b>	<b>415</b>	<b>169</b>	<b>175</b>	<b>175</b>	<b>1</b>	<b>0</b>	<b>0</b>
Kansas .....	1,220	1,070	1,200	1,090	975	1,025	10	5	5
Nebraska .....	1,290	1,360	1,400	905	890	900	15	20	30
Oklahoma .....	205	200	225	165	120	110	0	0	0
South Dakota ..	114	121	108	81	71	75	10	18	12
Texas .....	1,750	1,630	1,690	1,189	1,039	989	1	1	1
Washington .....	123	133	137	83	76	74	2	1	2
Other States ...	285	325	300	133	105	136	1	1	3
United States ..	6,935	6,736	6,960	4,298	3,918	3,967	49	56	62

### United States Cattle on Feed

Cattle and calves on feed for slaughter market in the United States for feedlots with capacity of 1,000 or more head totaled 11.0 million head on October 1, 2012. The inventory was 3 percent below October 1, 2011. The inventory included 6.96 million steers and steer calves, up slightly from the previous year. This group accounted for 63 percent of the total inventory. Heifers and heifer calves accounted for 3.97 million head, down 8 percent from 2011.

Placements in feedlots during September totaled 2.00 million, 19 percent below 2011. This is the lowest cattle placements for the month of September since the series began in 1996. Net placements were 1.94 million head. During September, placements of cattle and calves weighing less than 600 pounds were 515,000, 600-699 pounds were 355,000, 700-799 pounds were 444,000, and 800 pounds and greater were 690,000.

Marketings of fed cattle during September totaled 1.60 million, 12 percent below 2011. This is the second lowest cattle marketings for the month of September since the series began in 1996.

Other disappearance totaled 64,000 during September, 14 percent below 2011.